

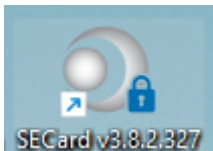
How do I set the communication speed between the encoder and SECard ?

Ensure that the SECard software is installed on your computer. If not, you can download it from the [STid Group - Designer of contactless identification solutions](#)

Connect the Encoder:

Attach the STid encoder (e.g., ARC-W35-G/BT1-5AA) to a USB port on your computer.

Launch SECard application:

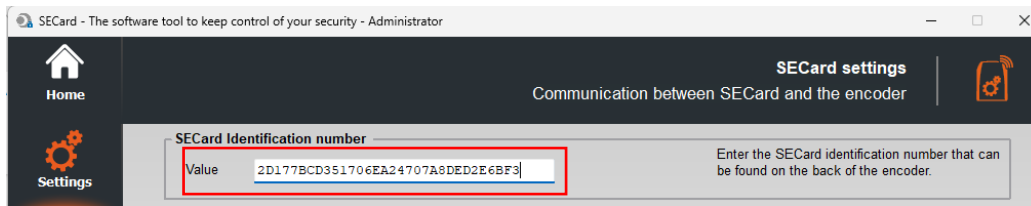


Select Access Level:

Choose "Administrator" and enter the default password: STidA.

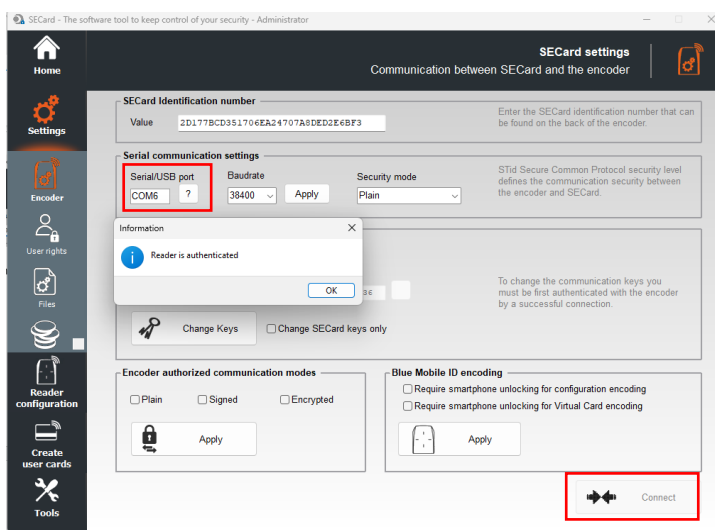


Enter Encoder Serial Number, On the first use, you'll be prompted to enter the 32-character serial number found on the back of the encoder.



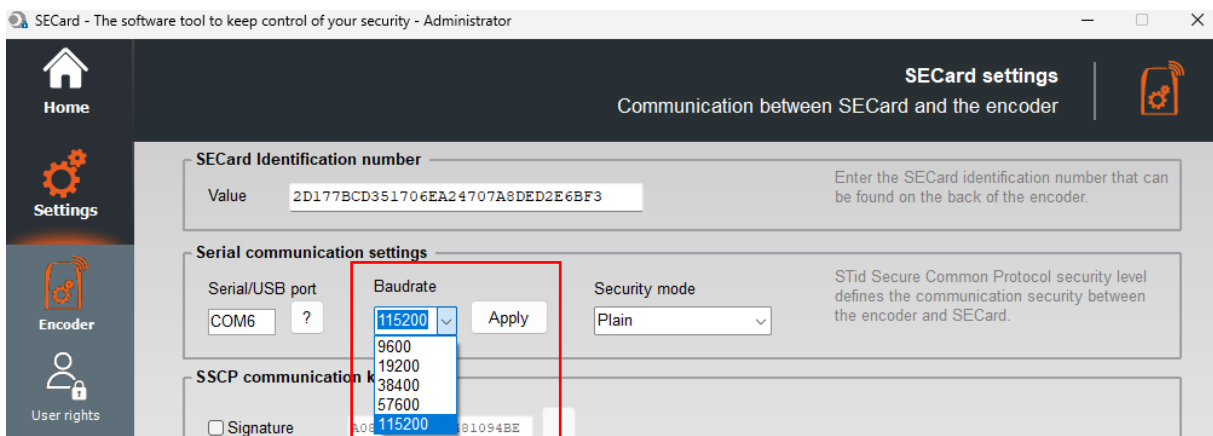
Configure SECard Settings:

Navigate to SECard settings and select the COM port corresponding to your connected encoder. If unsure, click the interrogation point to identify the correct port.



How do I set the communication speed between the encoder and SECard?

To do this, simply click on the speed of your choice in the 'baudrate' drop-down menu and click on Apply.



The following message indicates that the speed between your encoder and SECARD has now been changed

